

For Land, Contracts, Roads & Infrastructure Management

The **GeoERP** platform consists of three independent solutions that use a mutual core and can share the same spatial database. Each solution is designed to supply all the required tools it's targeted for, while maintaining vast customization capabilities.

LAPS

Land and Properties System.

IGIS

Infrastructure Geographic Information System.

CMMS

Contracts Management and Maintenance System.

ORACLE  **esri**
Autodesk  **Microsoft**



Sivan design
www.sivandesign.com

Sivan Design was incorporated in 1996 and rapidly became a global provider of customized enterprise level geospatial solutions integrating ERP (Enterprise Resource Planning) with GIS (Geographical Information System) capabilities, a developer of 3D GIS applications, and a developer of Civil Engineering CAD and 3D Simulation software.

The company is highly experienced in the development and implementation of solutions for:

- Land administration, contracts performance and maintenance, underground infrastructure and utilities management.
- 3D GIS cloud based applications supporting iPad and mobile devices.
- Surveying, road design, pipelines planning, and 3D simulation CAD software.

Israel
Phone: +972.9.777.8100

USA
Phone: +1-800-618-6817

Email: sales@sivandesign.com

GEOSPATIAL SOLUTIONS
FOR NATIONAL ASSETS



GeoERP

GIS-ERP Integrated Solution

For Land, Contracts, Roads & Infrastructure Management



Sivan design
www.sivandesign.com

GEOSPATIAL SOLUTIONS
FOR NATIONAL ASSETS

GeoERP Platform

- Three-Tier Geographic Information System (GIS) with Enterprise Resource Planning (ERP) capabilities for land, contracts, roads and infrastructure management.
- Designed to work as a distributed system using built-in compressed XML messaging communication mechanism and work also in synchronized off-line mode when network is down.
- Includes an integrated Electronic Document Management System (EDMS) component.
- Contains published web GIS map and advanced online services for the public.
- Includes a database driven workflows management and file tracking component.
- Delivers outstanding performance wrapped in an intuitive and user friendly interface with powerful permissions based user groups and audit trail for enhanced security.
- Offers easy customization to any aspect of the software and seamless integration between its components.

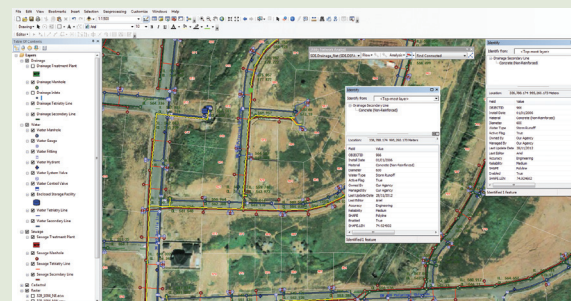
GeoERP is a fully customized software platform suited mainly for governmental authorities and enterprises. The software offers GIS oriented management capabilities of land, roads, and large scale infrastructure such as water, sewage, gas, oil, electricity and cables, from the contract stage, via development phase, to the daily workflow and routine maintenance.

IGIS Infrastructures GIS



IGIS is a GIS Based Management System for both above and under-ground infrastructure.

The system maintains detailed information about water, sewage, gas, oil, electricity, cable and any other infrastructures, starting from general information, via element level details, down to its sub-elements levels. Per element, the system can store and maintain various information including historical actions, ongoing and future maintenance procedures. The system features an intuitive and quick data access and retrieval interface with the ability to locate infrastructure directly on a map or an orthophoto. The statistical data and reporting module, supports remote information retrieval by on-site crews or by subsidiary offices.



IGIS HIGHLIGHTS

- Controlling and managing above and underground infrastructure systems.
- Storing maintenance history and location on a map.
- Set of tools and procedures to manage the network connectivity and flow direction.
- Large variety of statistical reports.
- Internet based collaboration of data between all users including decision makers, designers, consultants and field experts from anywhere in the world.

LAPS Land and Property System

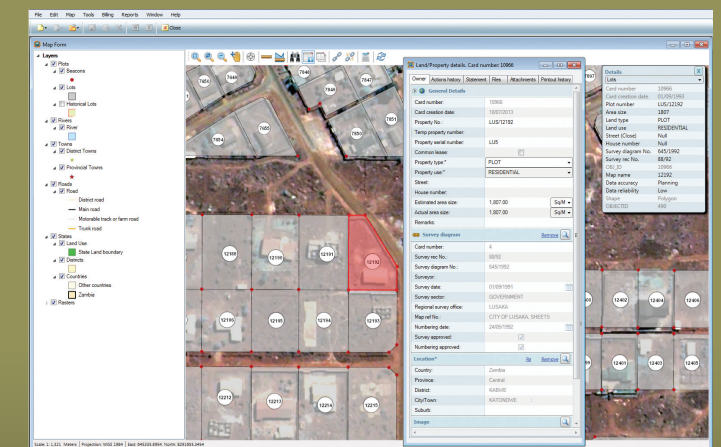


LAPS HIGHLIGHTS

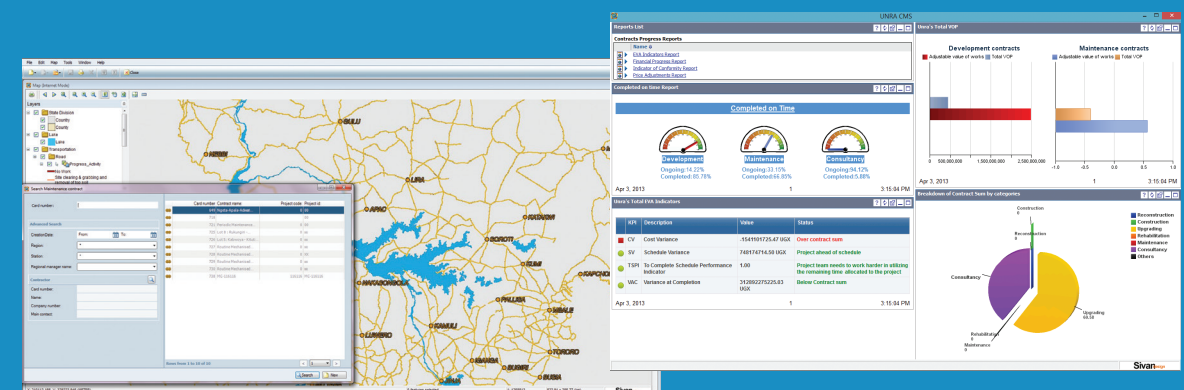
- Maximize tax revenues due to efficient registration and taxation billing management.
- Reliable revenue projection and budgeting based on verifiable statistics.
- Detailed diagrams and reports generation.
- Integrated online web application for the public to submit, query and track land related transactions.
- User permission based workflow management with file tracking capabilities.
- Cadaster processes management including topological authentication and historical layers archiving.

LAPS is a unique solution for Land and Property Management which includes a Revenue Generation System that handles all land registration's financial and billing aspects. The software stores and manages all land and land-related data, including ownerships, title documents and subsequent transactions such as deeds of sub-lease, deeds of assignment, etc. The system enables the user to store data, manage and audit processes with abilities to analyze and print result information in ease.

The GIS engines stores all cadastral layers including layers including plots, blocks, layouts, etc. with their geospatial information and are all linked to title documents' information.



CMMS Contract Management and Maintenance System



CMMS is used to manage contracts information and its carrying out progress. The system stores and analyzes various data, from general contract information, via contractor details, to more specific project contextual information such as carriage way width and pavement type as an example of roads projects data.

CMMS ranges through all contract phases, starting at the initiation point, via its progress, to ongoing maintenance procedures. The system includes an extensive budget module that intelligently compare between the contract information, it's carrying out progress and the correlation to the timeline and schedule.

Using its GIS engine, the system links all data to its geographical location enabling the user to access the data and view projects progress dynamically on a graphical map or orthophoto.

CMMS HIGHLIGHTS

- Contracts management starting at planning and design stage, through bidding phase to completion and maintenance.
- Maintaining data about ongoing projects, their status and progress.
- Costs implication including budget planning and payments control.
- Storage and analysis of maintenance operations.
- Includes broad Business Intelligence (BI) capabilities to provide management of all levels with tools for knowledgeable decision-making.
- As a complete ERP solution, CMMS bridges between various departments.