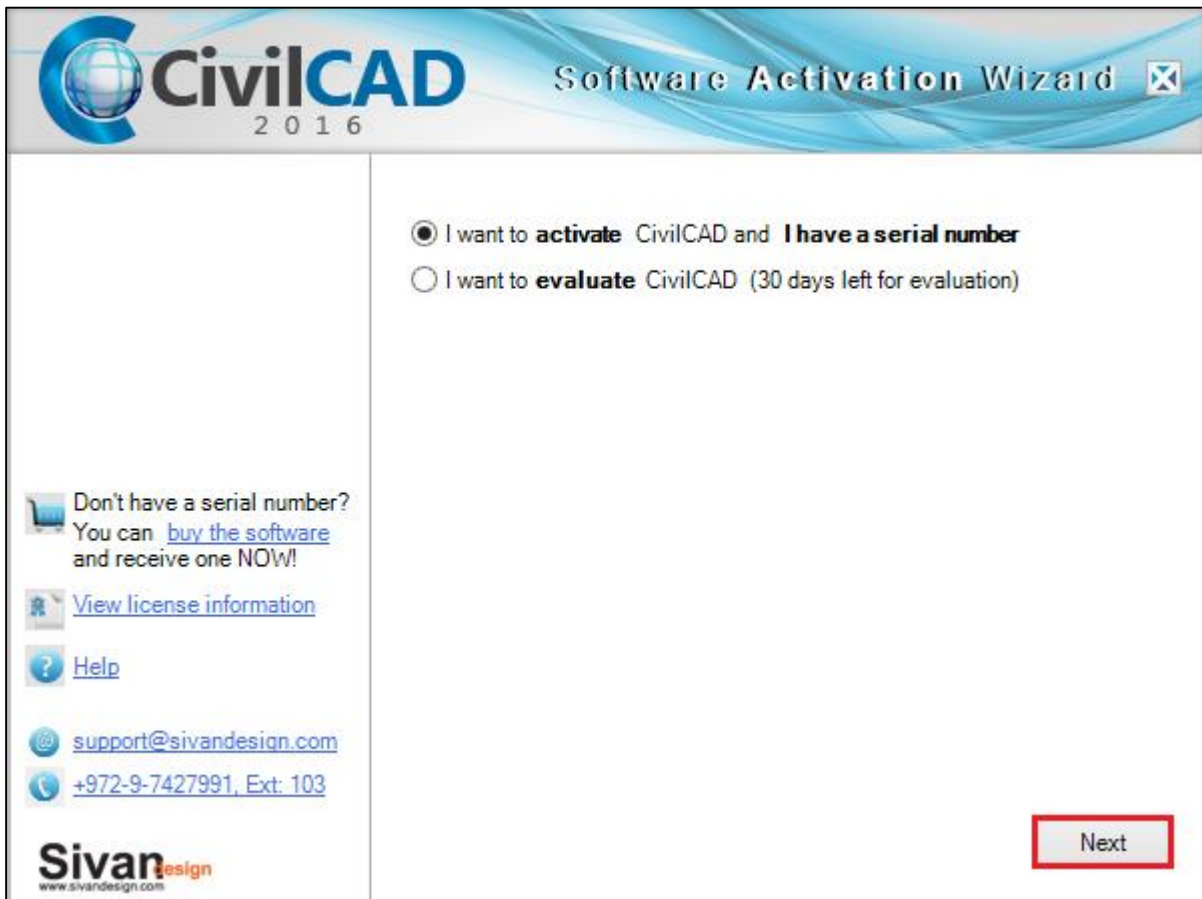


## Activating CivilCAD with a Local License

---

- 1) After purchasing CivilCAD software, you will receive a Serial Number and Activation Key.
- 2) Select "I want to **activate** CivilCAD and I have a serial number" option and click the 'Next' button.

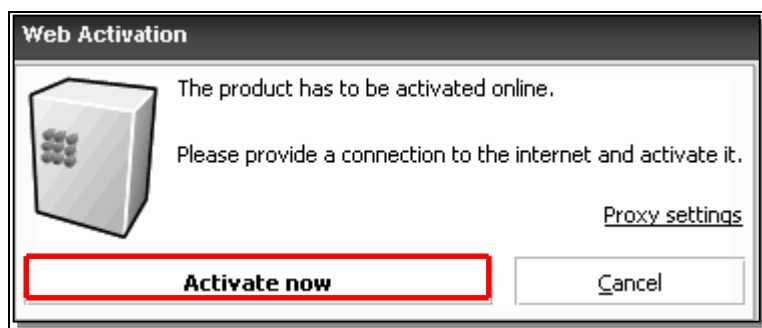


The screenshot shows the 'CivilCAD 2016 Software Activation Wizard' dialog box. The title bar includes the CivilCAD logo and the text 'Software Activation Wizard' with a close button. The main content area has two radio button options: the first is selected and reads 'I want to **activate** CivilCAD and I have a serial number', and the second is unselected and reads 'I want to **evaluate** CivilCAD (30 days left for evaluation)'. On the left side, there are several links: 'Don't have a serial number? You can [buy the software](#) and receive one NOW!', 'View license information', 'Help', 'support@sivandesign.com', and '+972-9-7427991, Ext. 103'. At the bottom left is the 'Sivan design' logo and website URL. At the bottom right is a 'Next' button with a red border.

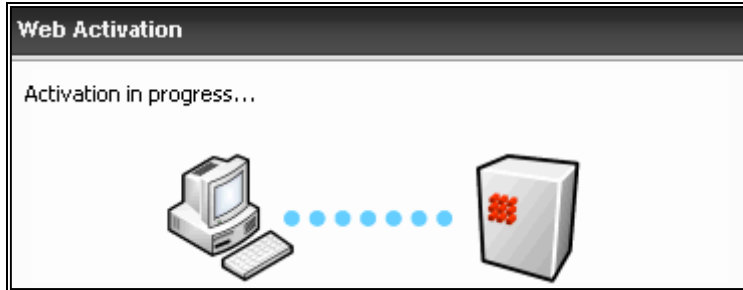
- 3) Enter your Serial Number, Activation key, Company Name, Email Address and click the 'Next' button.



- 4) 'Web Activation' window will open. Click on the 'Activate Now' button.

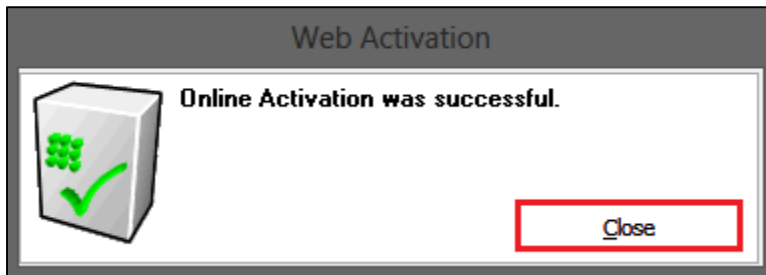


5) Activation process will start.



6) A window will open, with 'Online Activation was successful' message will appear.

7) Click on the 'Close' button.



8) When activation is finished, 'CivilCAD was successfully activated' message will appear.

9) Click on the 'Finish' button.



**CivilCAD** 2016 Software Activation Wizard

**CivilCAD was successfully activated**

- [Buy CivilCAD](#)
- [View license information](#)
- [Help](#)
- [support@sivandesign.com](mailto:support@sivandesign.com)
- [+972-9-7427991, Ext. 103](tel:+972-9-7427991)

**Sivan**esign  
www.sivandesign.com

Back Next

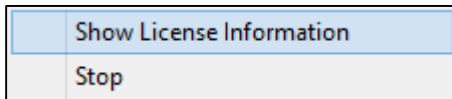
## Activating CivilCAD with a Network License

---

- 1) Install 'CivilCADLicense' application on the server.
- 2) After installation, go to the CivilCADLicense directory (default path is C:\Program Files\CivilCADLicense\) and allow Sharing and Full Permissions.
- 3) Restart the server or run the application from 'All Programs → Startup'.
- 4) The License Manager Application icon will appear in the notification area.

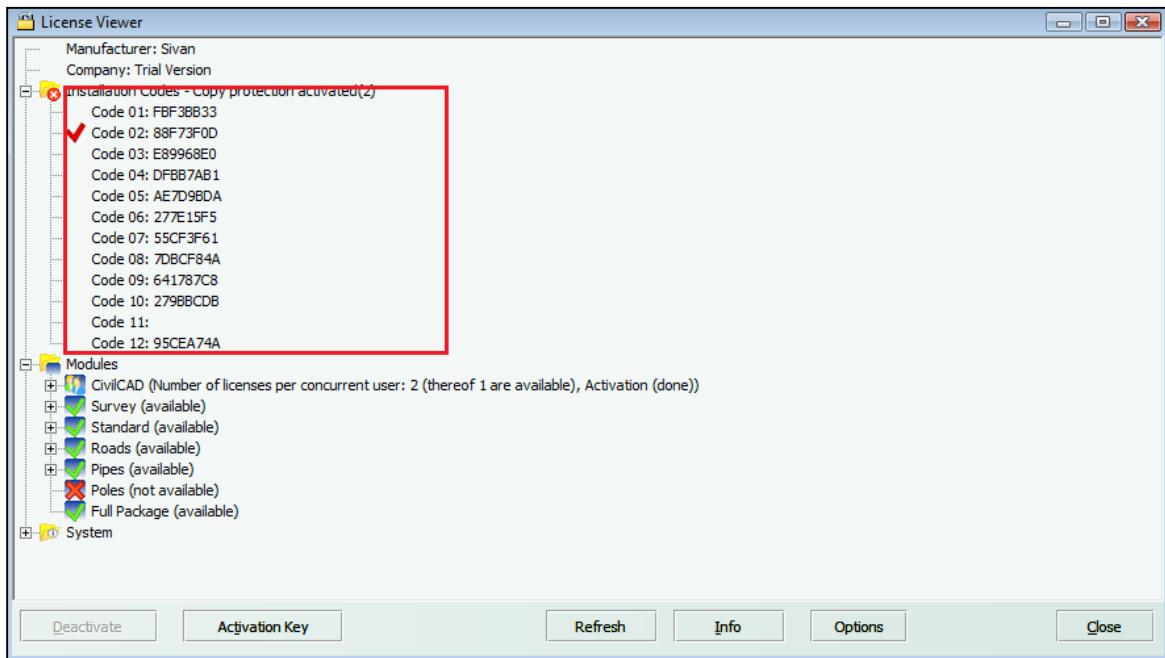


- 5) Right click on the 'Manager Application' icon and select 'Show License Information'.



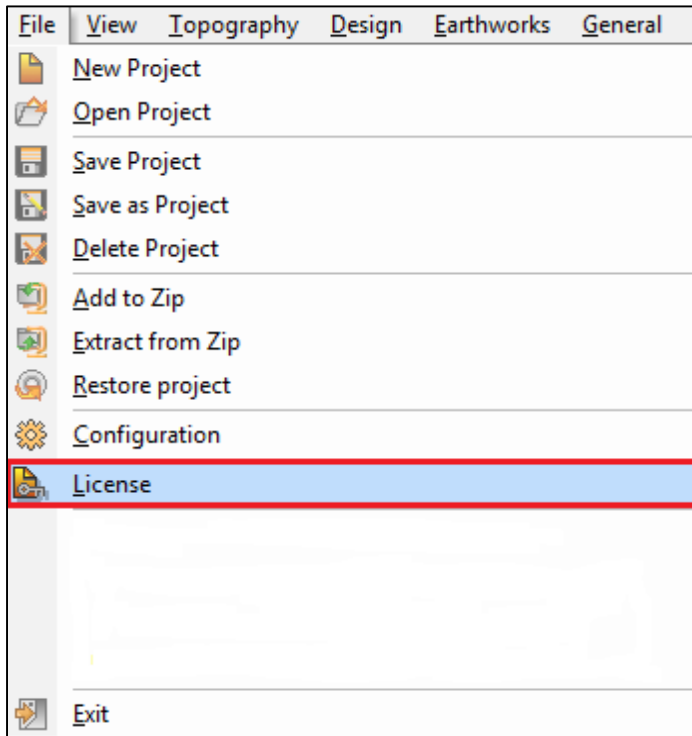


- 6) In the License Viewer window, click on '+' of 'Installation Codes'.
- 7) Double click on 'Mac Address' (Code 02). Mac Address data will be on Clipboard.
- 8) Send it to Sivan Design Support Team by email to: [support@sivandesign.com](mailto:support@sivandesign.com)

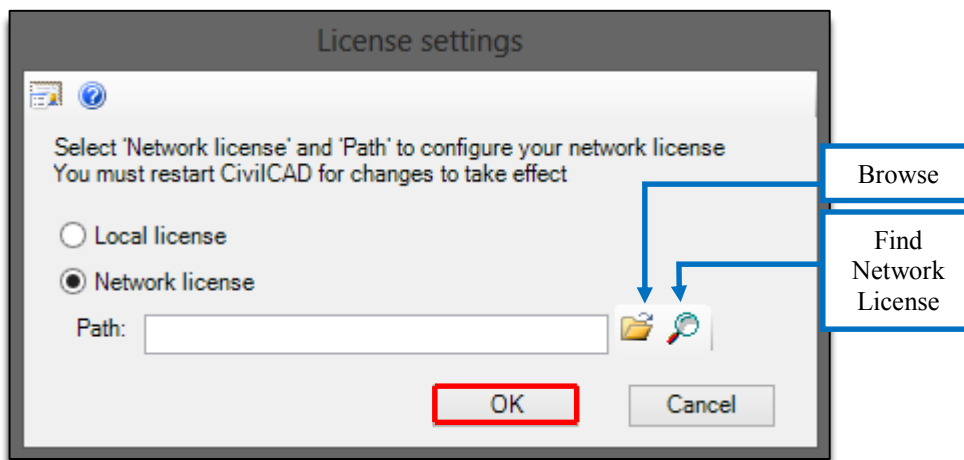



- 9) You will receive a license file by email.
- 10) Copy and replace it with the existing license file (default path is:  
C:\ProgramFiles\CivilCADLicense\)
- 11) Stop and restart the application from 'All Programs → Startup'.
- 12) In the working station, run CivilCAD.

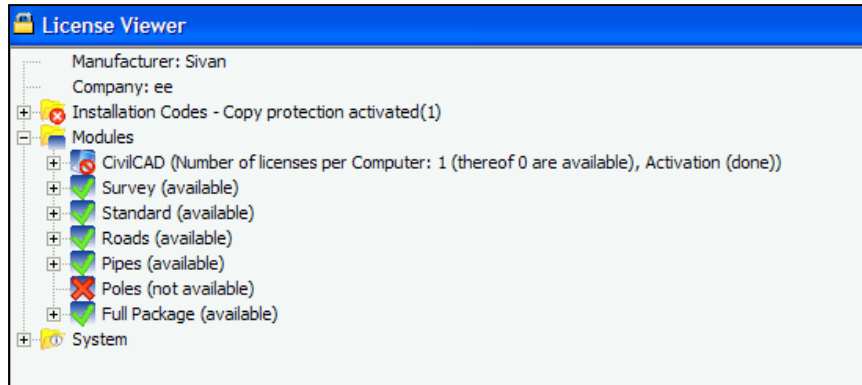
13) From the CivilCAD main menu, go to 'File → License'.




14) Select the "Network License" option, click the 'Browse' button to manually define the path to the License file or click the 'Search' button to automatically define the path to the License file and click 'OK' button.



**Note 1:** Click on the  button to view information regarding CivilCAD modules.



**Note 2:** Click on the  button to open a PDF file with installation/activation instructions.


15) Repeat steps 11-14 for each working station.

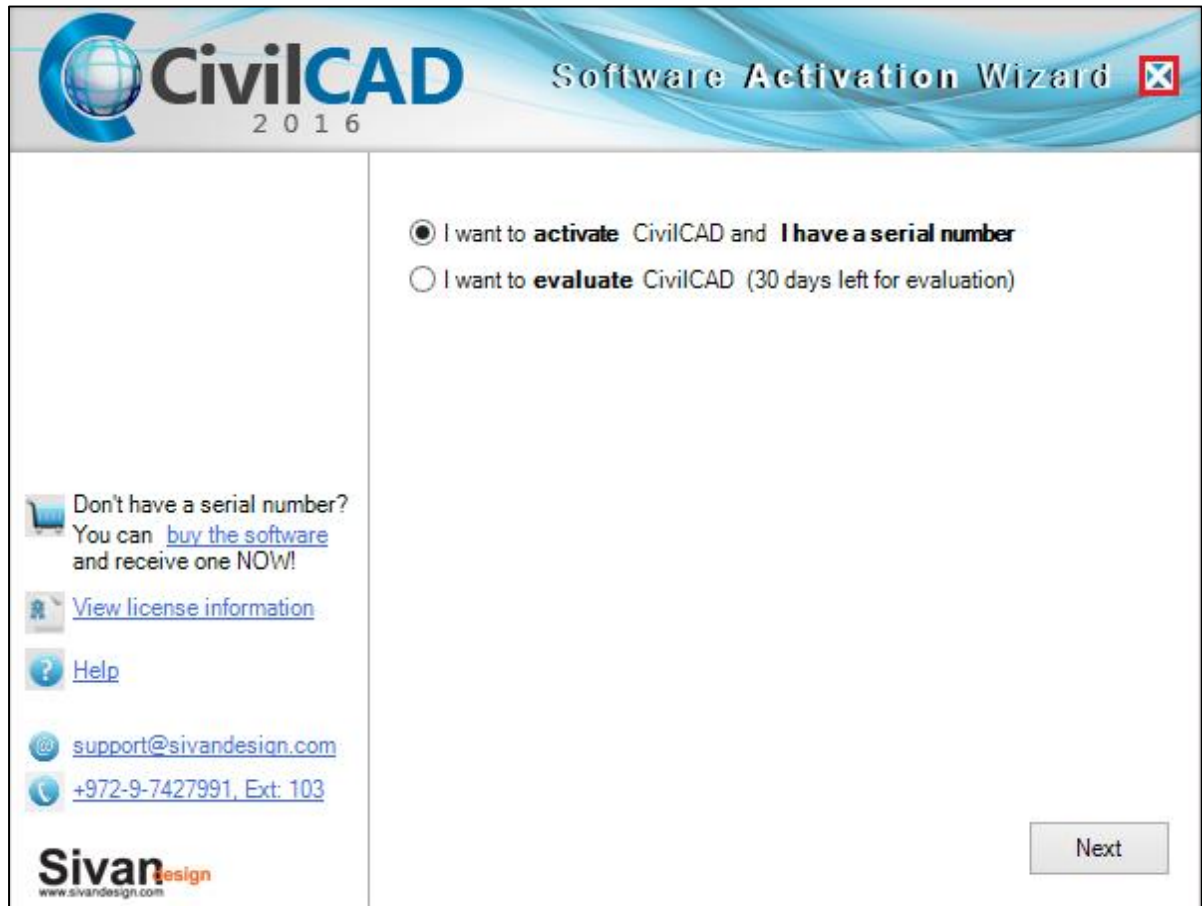
**Note 3:** Steps 11-14 refer to activation during the trial period. After the trial period, when you run CivilCAD, a CivilCAD activation window will open.

**Note 4:** In a case with several modules, e.g. 3 modules of 'Full Package, 2 modules of 'Roads' and 1 module of 'Standard', there will be 3 Licenses Files – one for each group of modules.

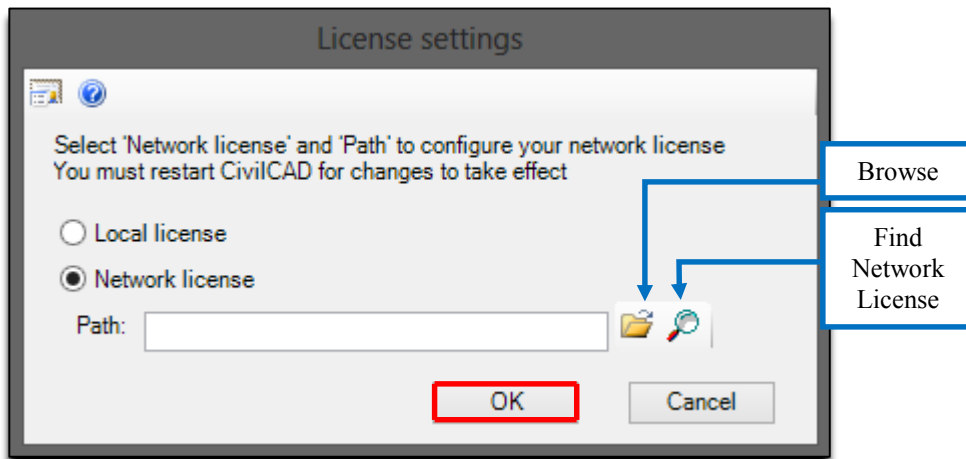
Since the name on the License files is identical - It is recommended to locate each License File in a different folder, e.g. 'Full Package License' and at each working station, locate the relevant license by using the 'Browse' option.



16) Click on the  button.



- 17) Select the “Network License” option, then click the ‘Browse’ button to manually define the path to the License file or click the ‘Find Network License’ button to automatically define the path to the License file and click ‘OK’ button.



- 18) Repeat steps 16-17 for each working station.