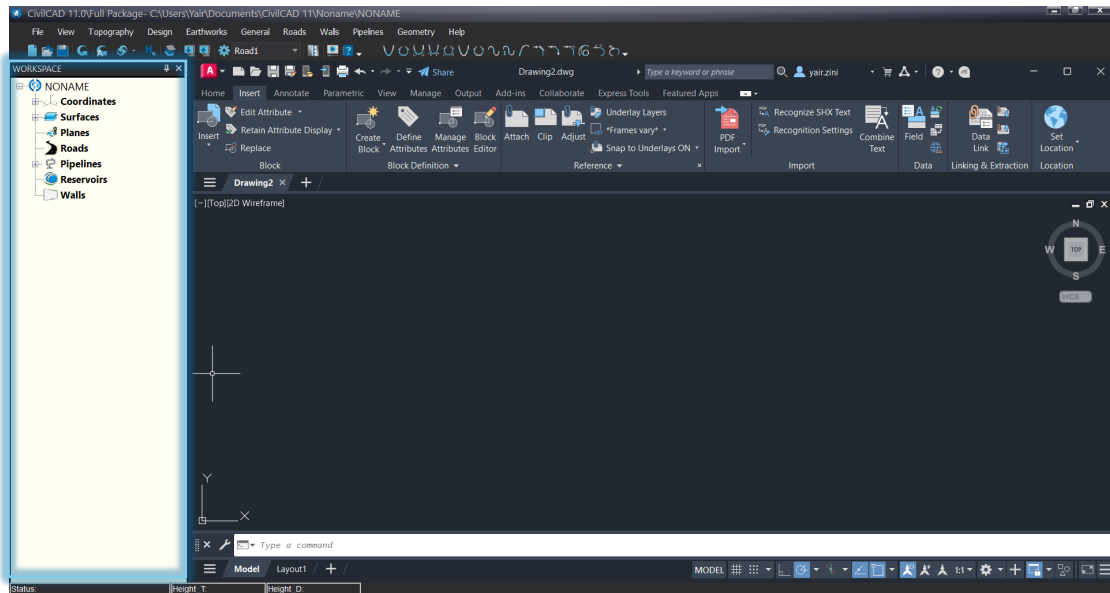
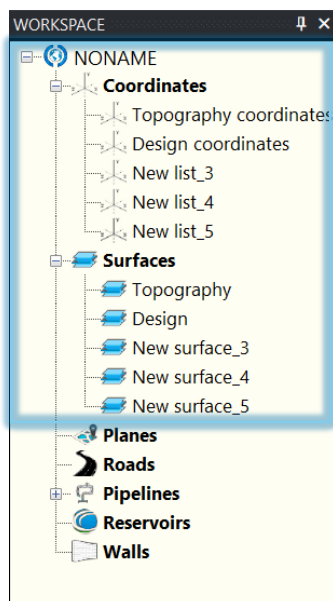


1. **Workspace** - The first and significant innovation that CivilCAD presents to you is the workspace - a control center that centralizes all your planning processes. In the first stages, basic tools will be implemented in the workspace and later on, more advanced tools.



2. **Multi Surfaces** - In CivilCAD11 you can load many coordinate lists and also create a large number of surfaces as needed. This development will help you with complex plans for performing earthworks, road planning and more.



3. Another new feature in CivilCAD 11 - Import/Export LandXML –

CivilCAD 11 will introduce a new feature allowing users to import surfaces from LandXML files and export all constructed surfaces to LandXML files.

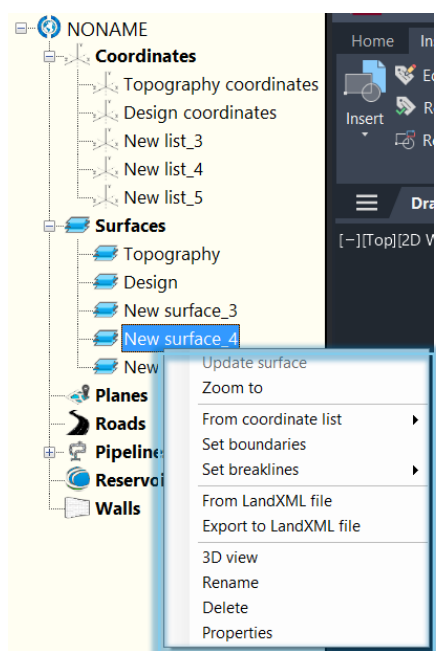
This functionality facilitates seamless collaboration with other disciplines and users employing different technologies, particularly when adhering to the BIM methodology.

– יכולת נוספת חדשה ב- CivilCAD 11 – יבוא/יצוא של LandXML

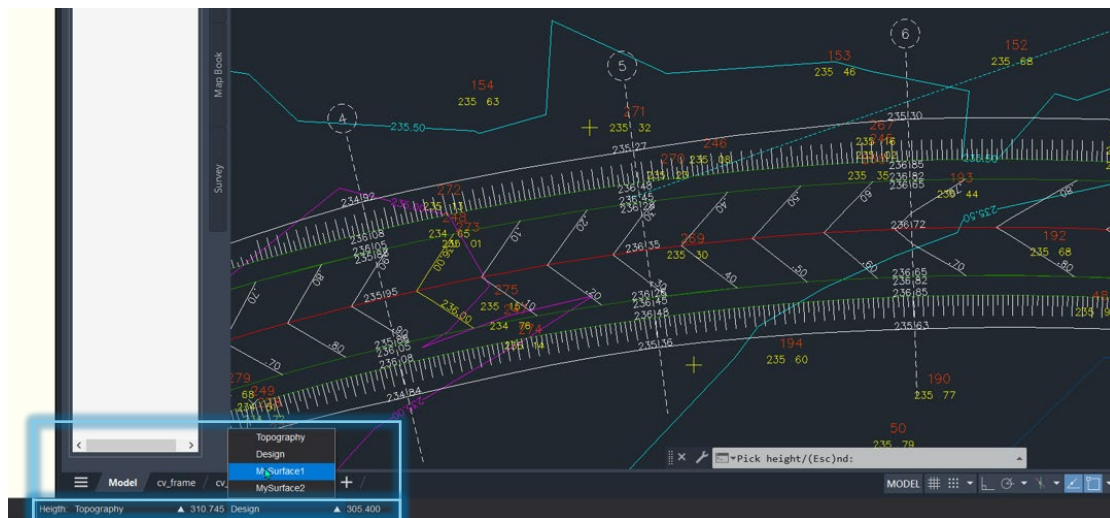
CivilCAD 11 תציג יכולת חדשה המאפשרת למשתמשים יבוא משטחים מקבצי LandXML – יצוא כל המשטחים שנבנו לקבצי LandXML.

יכולת זאת מאפשרת שיתוף מלא עם שיטות עבודה ותוכנות אחרות, במיוחד כאשר משתלבים בעבודת BIM.

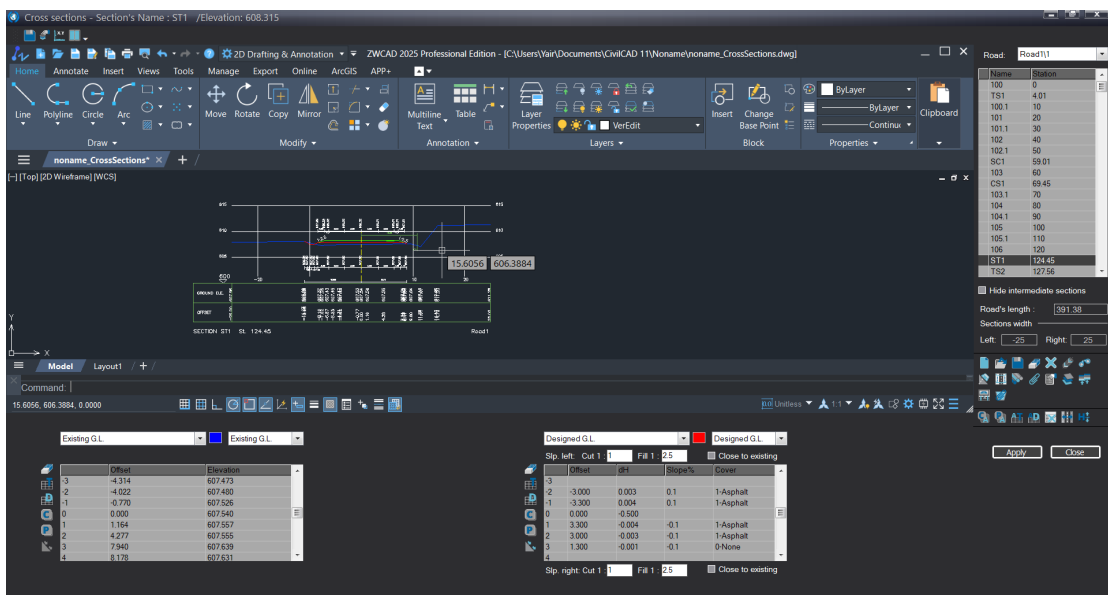
המלצתנו – צמצום השימוש ב- REG + DIS – המודד יעביר מודל בנוי ומושלם למתכנן בפורמט LandXML. מתכנן הכבישים יצור מודל הכביש בפורמט LandXML וישלב אותו עם מתכנני התשתיות, וכולי.



- Pick heights** – The updated 'Pick Heights' button will allow you to see the height at any point in the project as it is on any two surfaces of your choice.

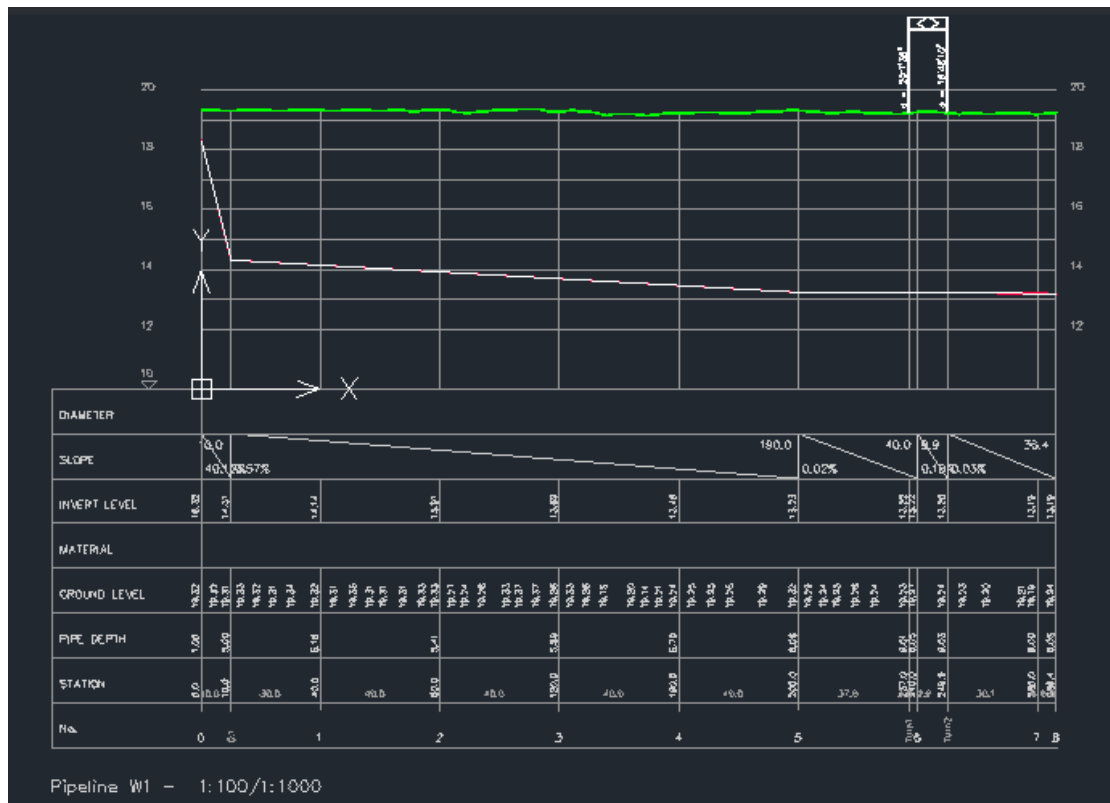


- Cross sections environment** – In CivilCAD 11, road cross-section design enters a fully integrated CAD environment, and Inside the window, an option for an interactive presentation of the axes throughout the planning was implemented offering greater sophistication, dynamism, and advancement.



6. Pipes Sections Lower Data Table –

In the new CivilCAD 11 you can now customize your pipelines sections' lower data table as you wish. Determine which rows will appear and which will not, change the order of the rows, and even modify the titles of each row as desired. CivilCAD offers versatility and flexibility that suits planners worldwide.



Design Grid Caption

Standatd Name	User Name	
DIAMETER	DIAMETER	<input checked="" type="checkbox"/>
SLOPE	SLOPE	<input checked="" type="checkbox"/>
INVERT LEVEL	INVERT LEVEL	<input checked="" type="checkbox"/>
MATERIAL	MATERIAL	<input checked="" type="checkbox"/>
GROUND LEVEL	GROUND LEVEL	<input checked="" type="checkbox"/>
DESIGNED G.L.	DESIGNED G.L.	<input checked="" type="checkbox"/>
PIPE DEPTH	PIPE DEPTH	<input checked="" type="checkbox"/>
EXISTING G.L.	EXISTING G.L.	<input checked="" type="checkbox"/>
STATION	STATION	<input checked="" type="checkbox"/>

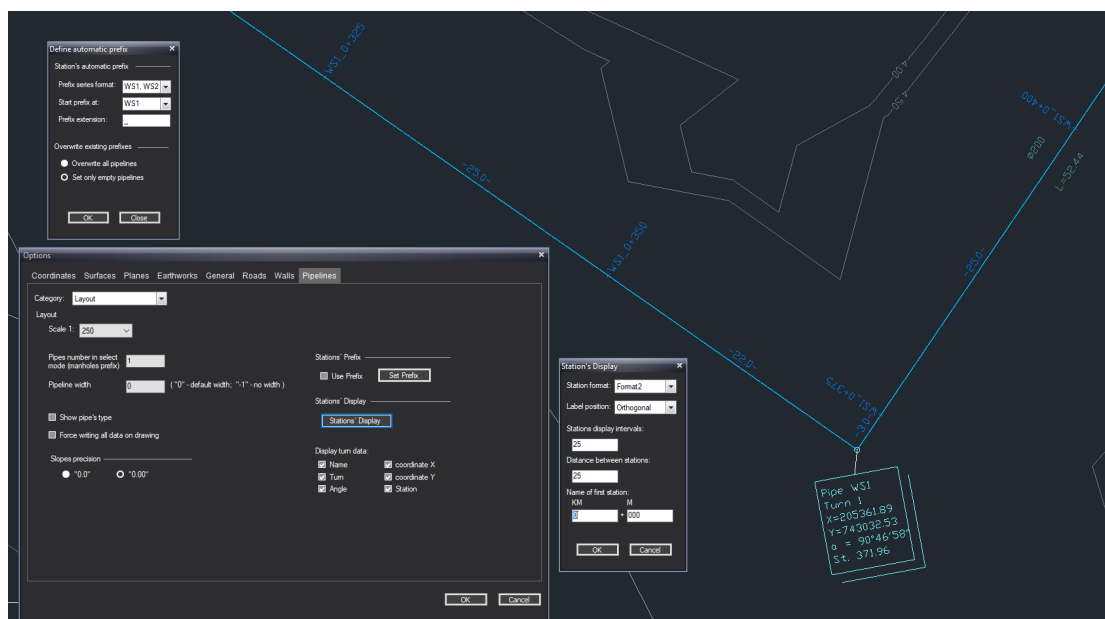
Order

OK Cancel

7. Stations Along Water-Supply Pipelines

The new *CivilCAD 11* offers the option to independently set the display of formats, distances, and information of stations along a Water-Supply Pipeline's layout. You can also set automatic or specific prefixes to these stations.

Using the new stations display tools you can efficiently organize your information along pipelines and create a clearer difference between pipelines in a pipelines network.

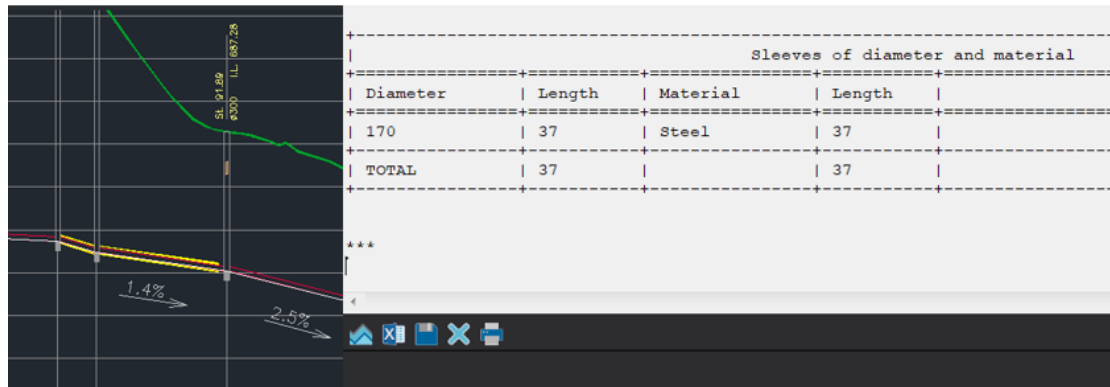


CivilCAD 11 החדש מציע אפשרות להגדיר באופן עצמאי את התצוגה של פורמטים, מרחקים ומידע של תחנות לאורך הפריסה של צינור אספקת מים. ניתן גם להגדיר קידומות אוטומטיות או ספציפיות לתחנות אלו.

באמצעות כלי התצוגה החדשים של התחנות תוכלו לארגן ביעילות את המידע שלכם לאורך צינורות וליצור הבדל ברור יותר בין צינורות ברשת צינורות.

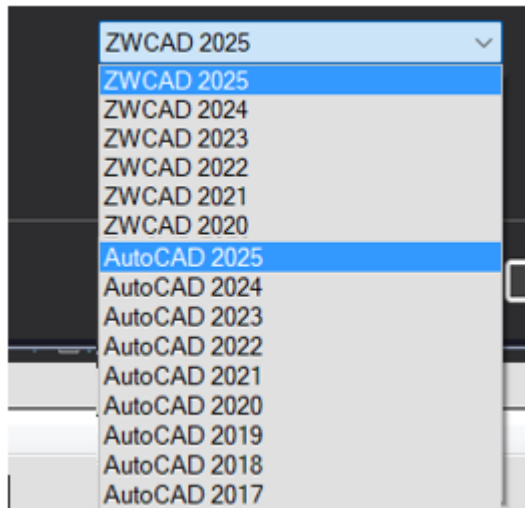
8. Pipe Designing Features – Sleeves

In CivilCAD 11, you can design sleeves for the required support pipes. The sleeve will appear in the section view, and its data will also be included in the quantities report.



9. Pipe designing features - Another additional tool for displaying pipes in the layout is the automatic prefix addition for the pipes in the project. This tool is efficient in organizing your information within the maze of existing pipes and drawing lines in the project.

10. Advancing forward: Support for Future Standards and Streamlined License Management - CivilCAD 11 is fully compatible for use with AutoCAD 2025 and ZWCAD software 2025. In addition, the option to transfer a license independently from one computer to another has been added.



11. Single file only - In CivilCAD 11, your project will be consolidated into a single .prj file. You no longer need to worry about preserving numerous files. From now on, general operations are cleaner and more streamlined.

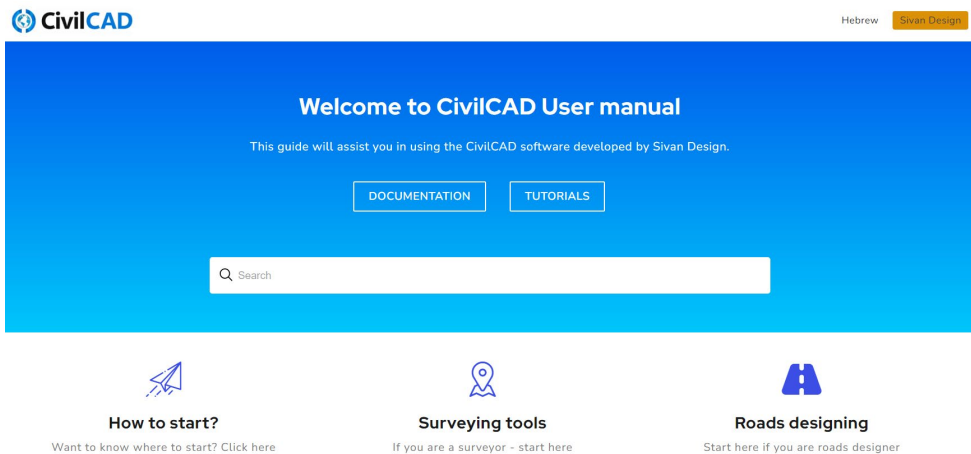
BEFORE

2 KB	קובץ טקסט	12/02/2024 14:24	Sample7.srt
1 KB	CAR קובץ	14/04/2024 09:58	Sample7.car
2 KB	DCO קובץ	19/02/2024 10:43	Sample7.dco
0 KB	DIS קובץ	04/12/2009 03:19	Sample7.dis
1 KB	DPL קובץ	04/12/2009 03:20	Sample7.dpl
53 KB	ERP קובץ	19/02/2024 10:42	Sample7.erp
245 KB	G קובץ	19/02/2024 10:42	Sample7.g
1,528 KB	LOL קובץ	21/02/2024 01:06	sample7.lol
0 KB	PAS קובץ	04/12/2009 03:19	Sample7.pas
244 KB	PIP קובץ	25/01/2024 20:12	Sample7.pip
20 KB	PR1 קובץ	14/04/2024 09:58	Sample7.pr1
118 KB	PRJ קובץ	14/04/2024 09:58	Sample7.prj
41 KB	RC21 קובץ	19/02/2024 10:42	Sample7.rc21

118 KB	PRJ קובץ	14/04/2024 09:58	Sample7.prj
--------	----------	------------------	-------------

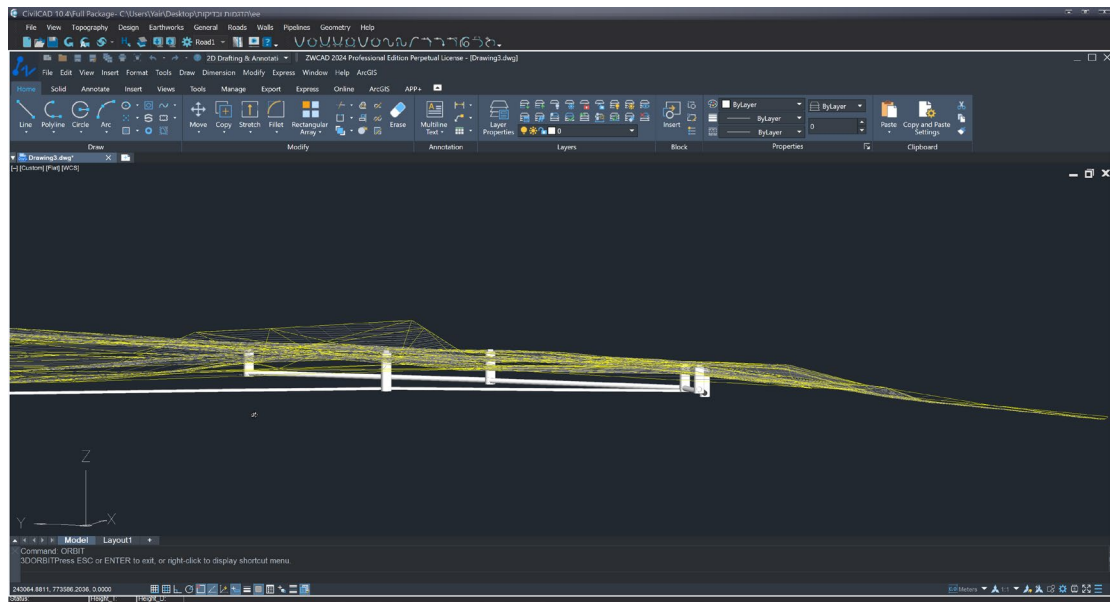
AFTER

12. Online User manual - At Sivan Design, we're making the user guide more accessible by uploading it to the internet. This way, you can easily find explanations and tutorials for different tasks. We're doing this in stages, and you will be able already watch the first episodes we've uploaded.



13. Extensive BIM support

As part of the improved BIM support within the software, in the new CivilCAD 11 you can easily export pipelines into IFC files (which can be read using various platforms which supports BIM) and upload them into a BIM cloud (such as BIM 365). You can also add these BIM modules to your own project.



14. Editing breaklines from the drawing: We have improved the break lines mechanism. You can now move and edit the lines directly from the drawing. Simply reposition the line where you want it and click 'Update surface'.

15. Defining the area of a surface: we have improved the mechanism for defining the area of the surface so that you can accurately get the surface within the limits you have defined without distortions and various constraints.

